



THE WILLOW

AT HARVEST RIDGE

4 Bedroom | 4 Bath | Dedicated Study | 4 Car RV Garage

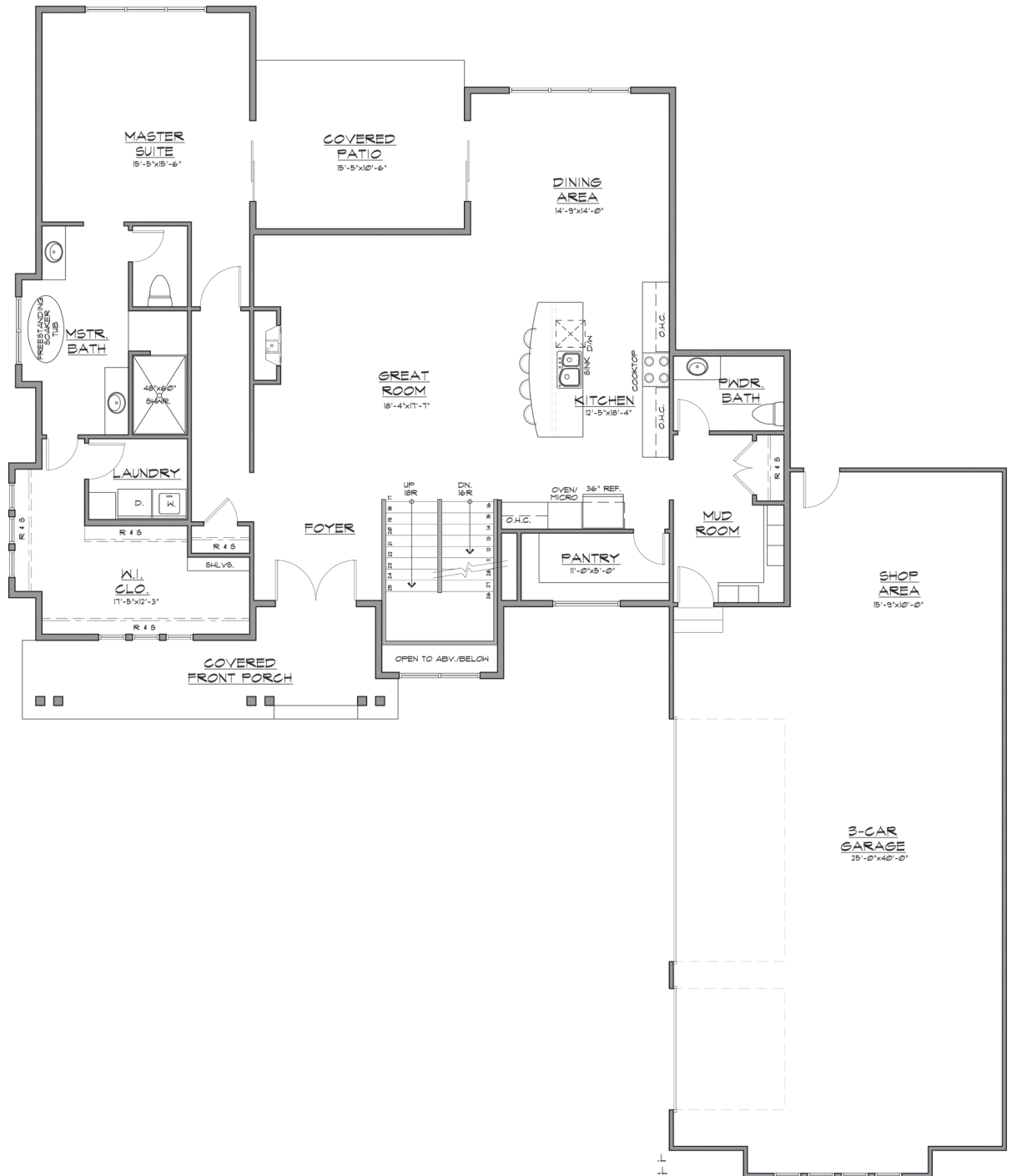
Main Floor:	2,051 SqFt
Upper Floor:	1,587 SqFt
Basement:	1,587 SqFt
Total SqFt:	5,225 SqFt
Finished SqFt:	3,639 SqFt

There's No Place Like Home



THE WILLOW

MAIN FLOOR PLAN



THE WILLOW

UPPER FLOOR PLAN

